



**LOTO SAFETY REQUISITES TRADING L.L.C.**  
Tel:+971-4-4539779 Fax:+971-4-4539778 DUBAI - UAE  
E-mail:info@lotosafetyproducts.com

**CALL US TODAY: +971-50-5843270**  
[www.lotosafetyproducts.com](http://www.lotosafetyproducts.com)

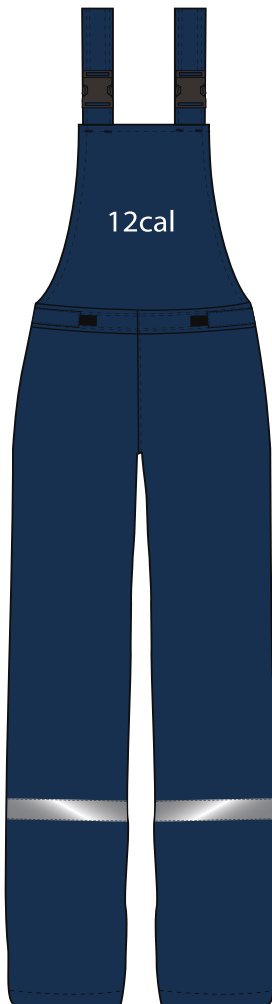
## ARC FLASH 12 CAL KIT COMPOSITION

**TARARC™**

**BLOKARC™**  
Series

## ARC FLASH KIT - 12 CAL

BIB



COAT



GEAR BAG



HOOD



HOOD BAG

**Model No.: KIT-AF12-TABL-SBHD**



EN ISO 11612



EN ISO 11611



EN 1149-5



EN 61482-1-2



EN 13034



EN ISO 20471



NFPA 70E



NFPA 2112



ANSI 107



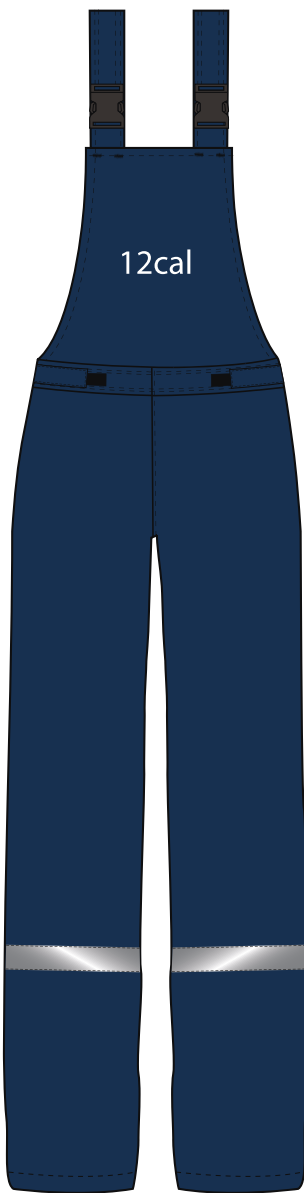
**LOTO SAFETY REQUISITES TRADING L.L.C.**  
 Tel:+971-4-4539779 Fax:+971-4-4539778 DUBAI - UAE  
 E-mail:info@lotosafetyproducts.com

**CALL US TODAY: +971-50-5843270**  
[www.lotosafetyproducts.com](http://www.lotosafetyproducts.com)

**ARC FLASH 12 CAL BIB OVERALL**



**FRONT**

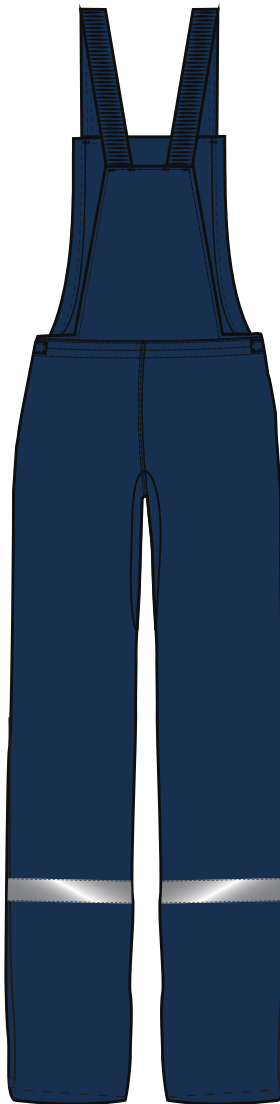


**Taramod MA CINCO 250**

**Fabric Weight: 250gsm**

**Weave: Rip Stop**

**BACK**



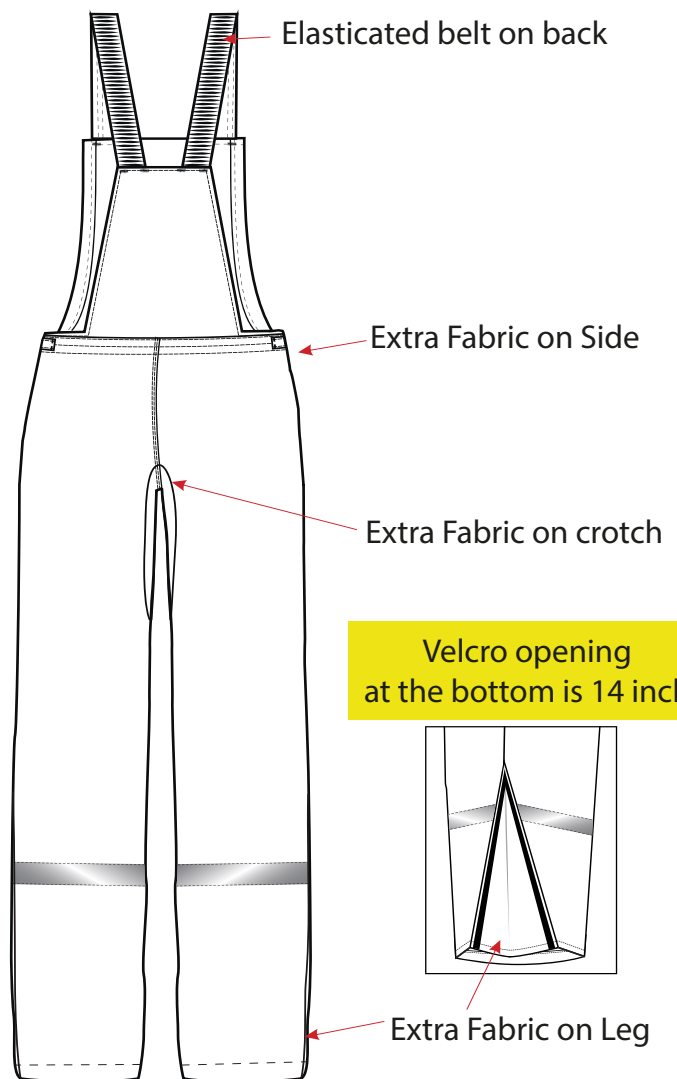
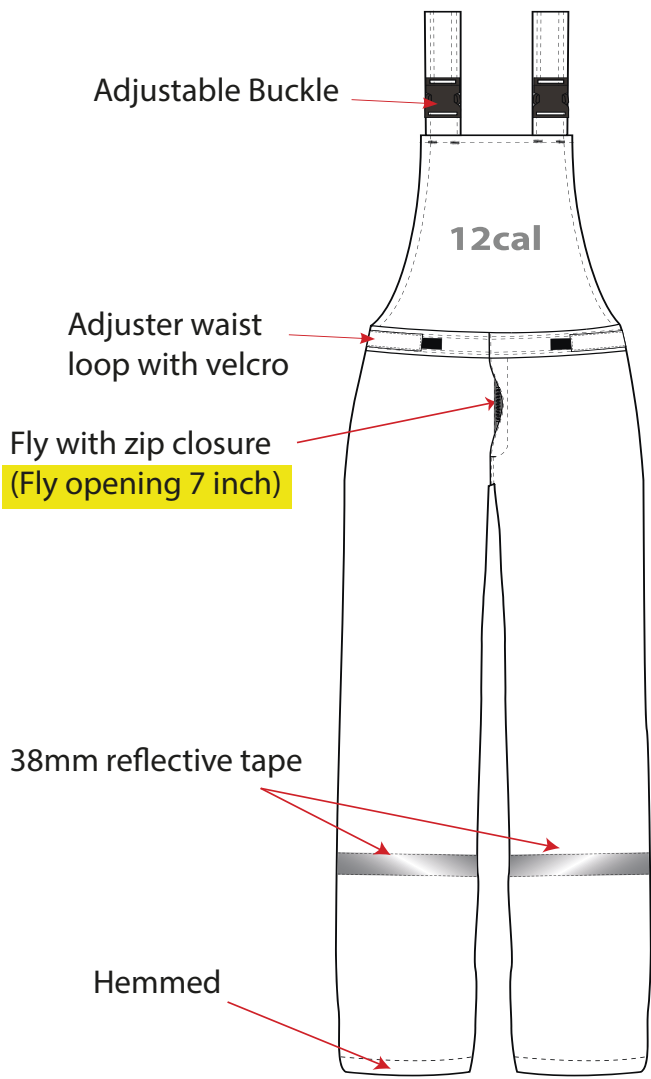


**ARC FLASH 12 CAL BIB OVERALL**

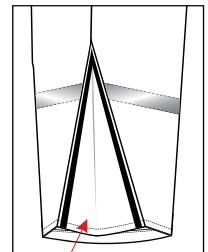


**FRONT**

**BACK**



Velcro opening at the bottom is 14 inch





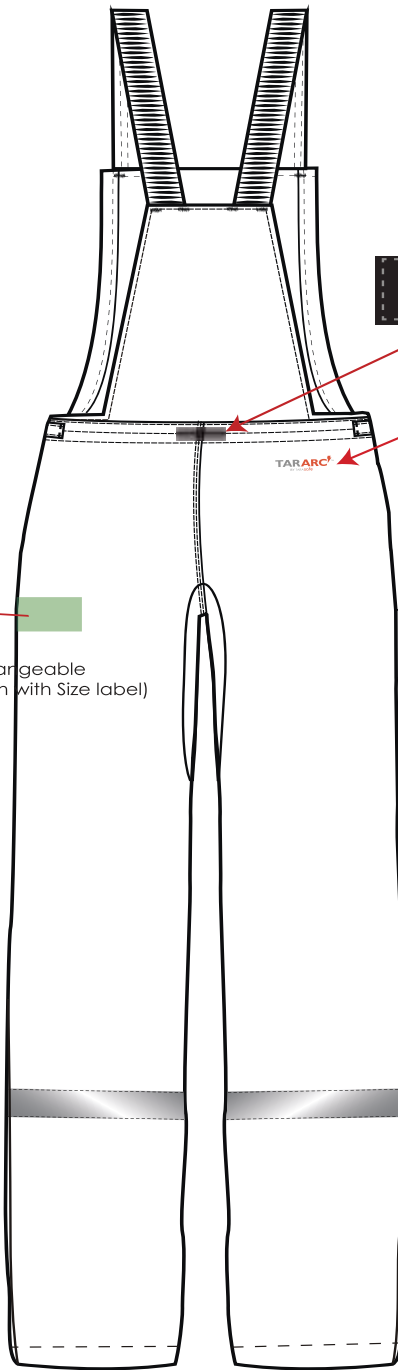
**LOTO SAFETY REQUISITES TRADING L.L.C.**  
 Tel:+971-4-4539779 Fax:+971-4-4539778 DUBAI - UAE  
 E-mail:info@lotosafetyproducts.com

**CALL US TODAY: +971-50-5843270**  
[www.lotosafetyproducts.com](http://www.lotosafetyproducts.com)

**ARC FLASH 12 CAL BIB OVERALL - LABEL**



**SIZING: US/EU**



Woven Size label

Changeable (size Match with main label)

Heat transfer label

Main label  
 Position : Left side seam inside

**TARARC**  
 BY TARASOFT  
 Marketed By LOTO Safety Dubai (UAE)  
 Model: BLOKARC-12BD-SMNY  
 Tararhod MA CINCO 250  
 HRC 2 Flame-Resistant  
 ATPV: 12 cal/cm² as per ASTM F1959

The fabric of this Flame Resistant garment meets the requirements of NFPA 2112, standard on Flame resistant clothing for Protection of Industrial Personnel against Short Duration Thermal Exposures from Fire.


Wash at 60°C.  
 - Do not use detergents containing phosphate or chlorine.  
 - Do not bleach.  
 - Do not use acids when rinsing.  
 - Iron at Low setting (below 90 C).  
 - Use dry cleaning agent other than Trichloroethylene.  
 - Tumble dry allowed.

Care :  
 - Do not iron on labels & logos.  
 - Inspect garment before each use for damage or contaminants that impair protective qualities of the garment.  
 - Failure to launder properly may affect the Flame Resistance of the garment.  
 - Clean Garment thoroughly.

**DO NOT REMOVE LABEL**  
 MADE IN INDIA

Changeable (size Match with Size label)



**LOTO SAFETY REQUISITES TRADING L.L.C.**  
 Tel:+971-4-4539779 Fax:+971-4-4539778 DUBAI - UAE  
 E-mail:info@lotosafetyproducts.com

**CALL US TODAY: +971-50-5843270**  
[www.lotosafetyproducts.com](http://www.lotosafetyproducts.com)

**ARC FLASH 12 CAL 32" LENGTH COAT**

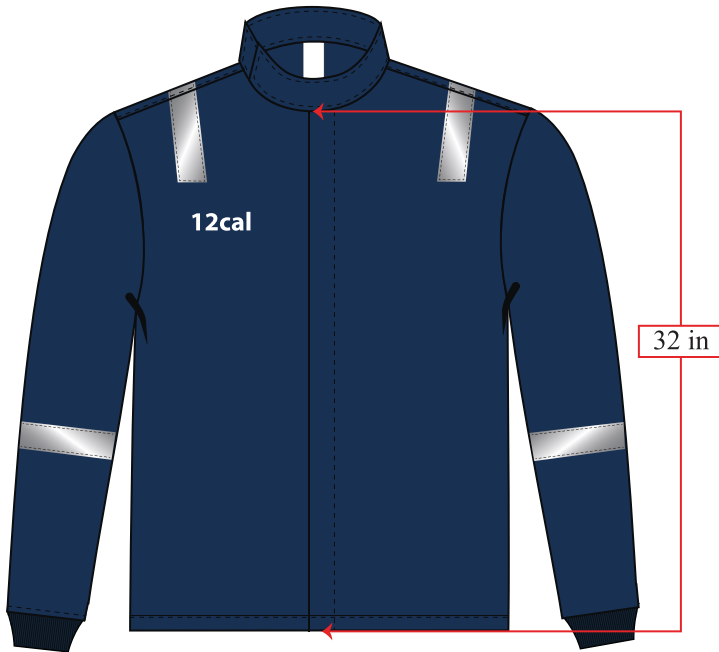


**FRONT**

**Taramod MA CINCO 250**

**Fabric Weight: 250gsm**

**Weave: Rip Stop**



**BACK**





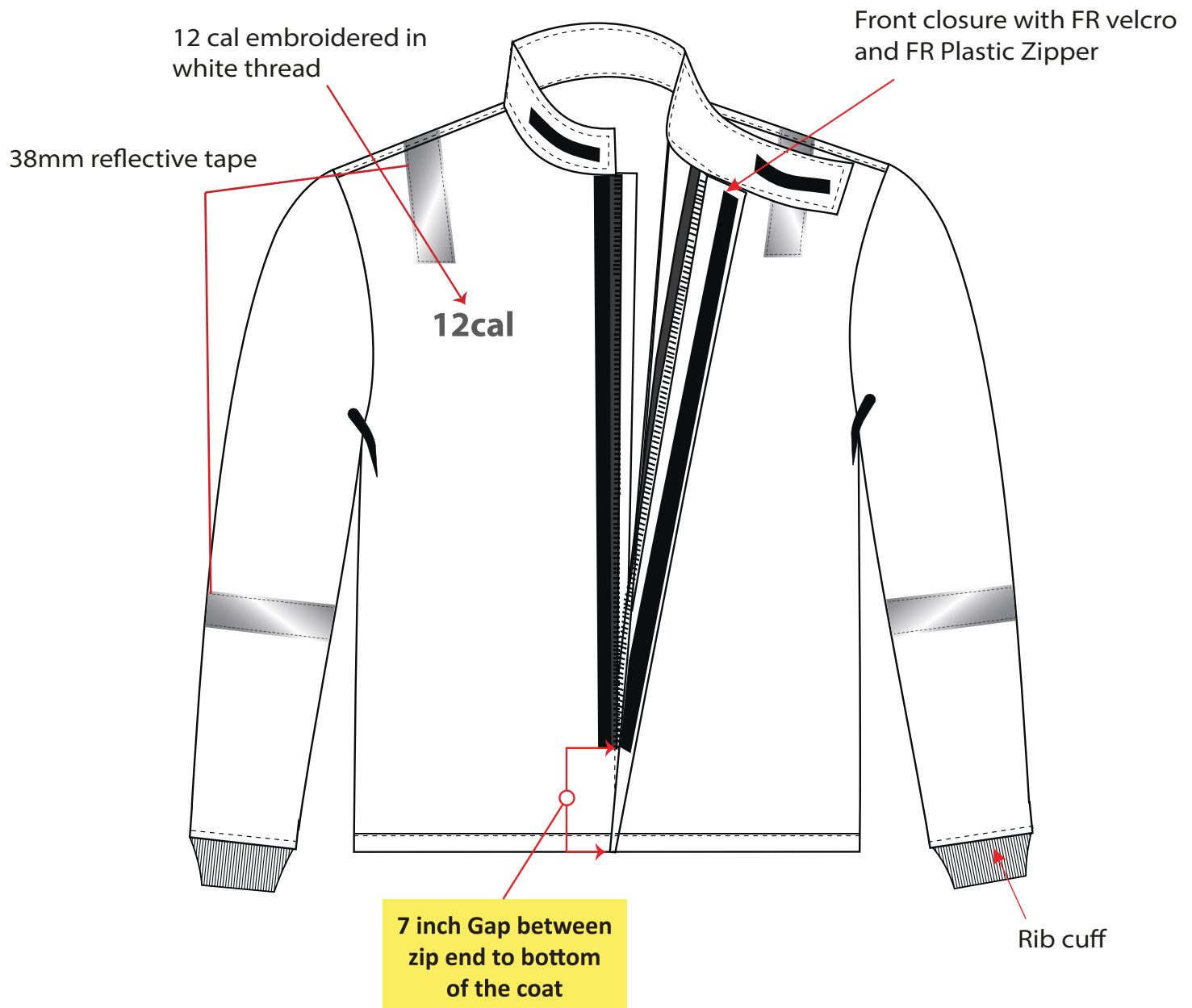
**LOTO SAFETY REQUISITES TRADING L.L.C.**  
 Tel:+971-4-4539779 Fax:+971-4-4539778 DUBAI - UAE  
 E-mail:info@lotosafetyproducts.com

**CALL US TODAY: +971-50-5843270**  
[www.lotosafetyproducts.com](http://www.lotosafetyproducts.com)

**ARC FLASH 12 CAL 32" LENGTH COAT**



**FRONT**





**LOTO SAFETY REQUISITES TRADING L.L.C.**  
 Tel:+971-4-4539779 Fax:+971-4-4539778 DUBAI - UAE  
 E-mail:info@lotosafetyproducts.com

**CALL US TODAY: +971-50-5843270**  
[www.lotosafetyproducts.com](http://www.lotosafetyproducts.com)

**ARC FLASH 12 CAL 32" LENGTH COAT - LABEL**



**SIZING: US/EU**

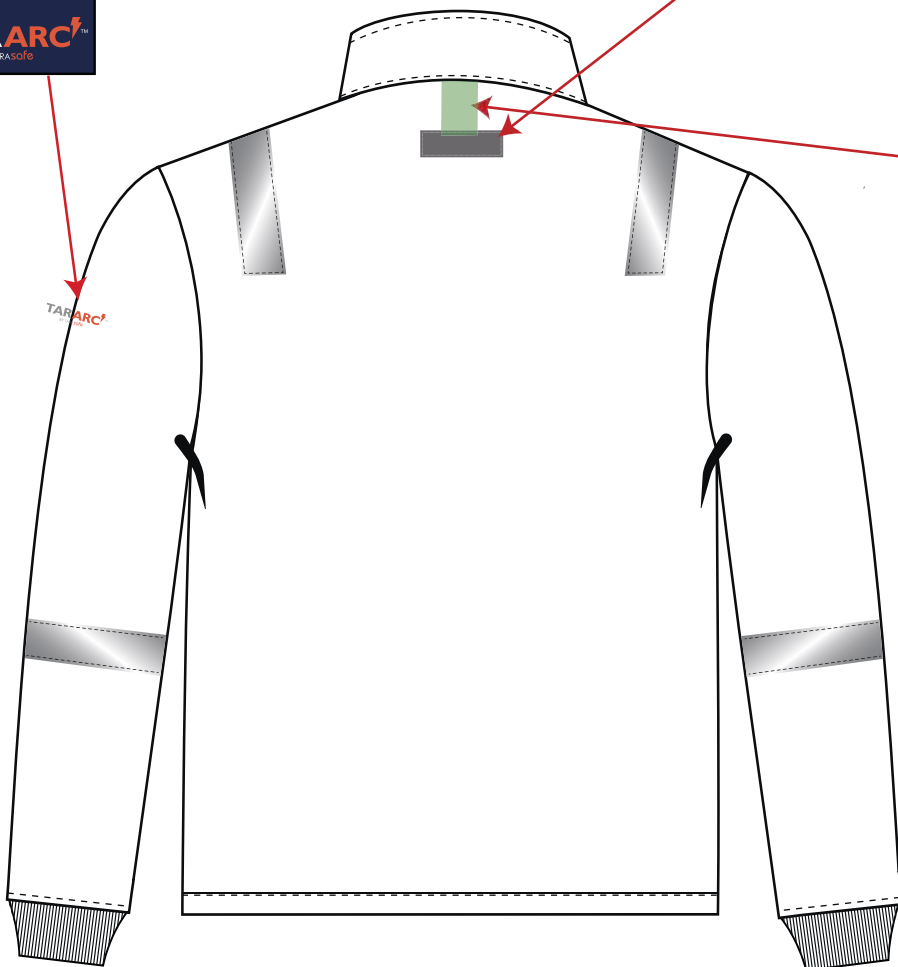
Heat transfer label



Woven Size label



Changeable  
(size Match with main label)



Main label



Changeable  
(size Match with Size label)



**LOTO SAFETY REQUISITES TRADING L.L.C.**

Tel:+971-4-4539779 Fax:+971-4-4539778 DUBAI - UAE  
E-mail:info@lotosafetyproducts.com

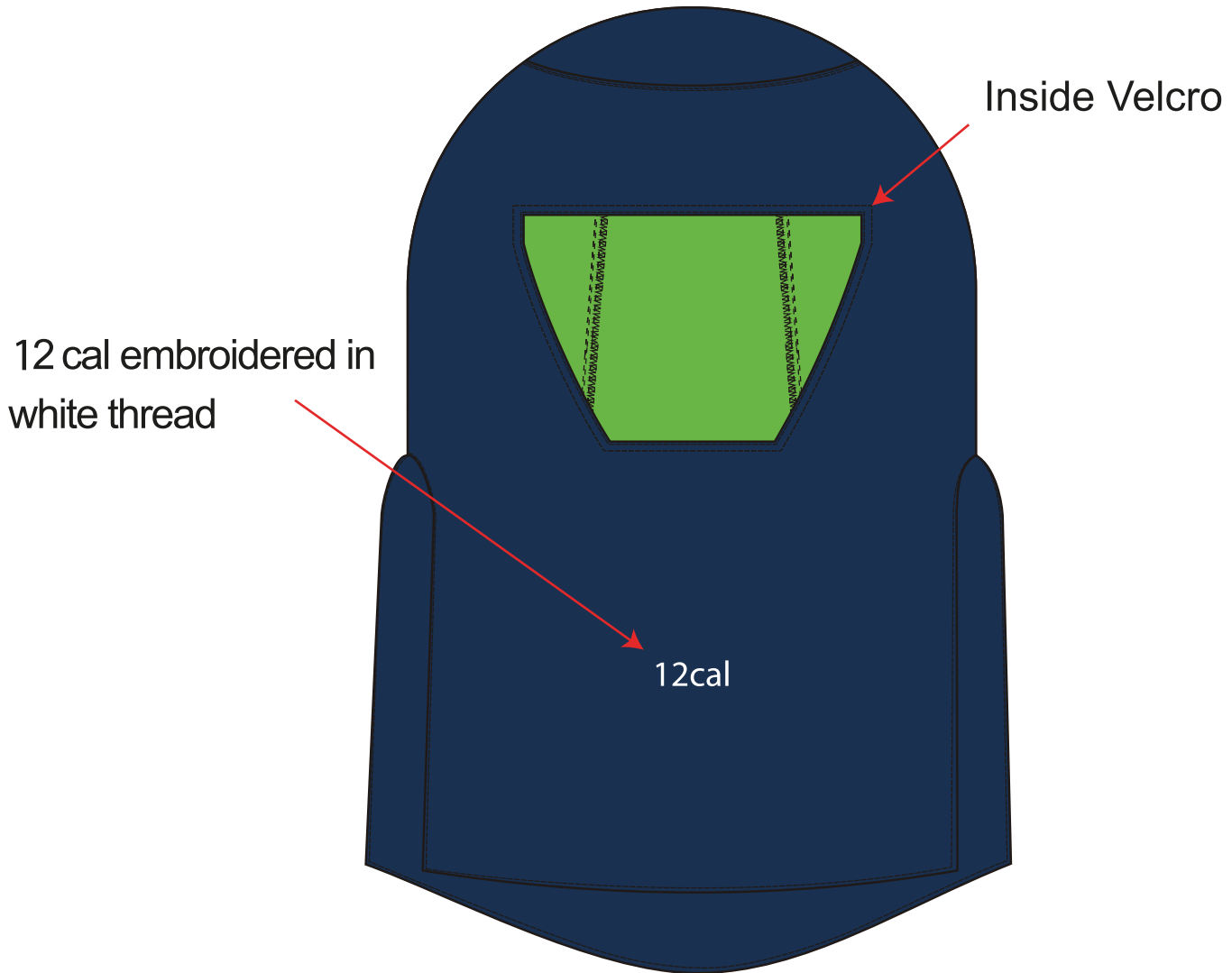
**CALL US TODAY: +971-50-5843270**

[www.lotosafetyproducts.com](http://www.lotosafetyproducts.com)

**ARC FLASH 12 CAL HOOD**



**Taramod MA CINCO 250**  
**Fabric Weight: 250gsm**  
**Weave: Rip Stop**







**MEASUREMENT CHART - CMS / INCHES**



**SIZING: US/EU**

BIB OVERALL MEASUREMENT CHART - CMS							Size Spec # 466	
Particulars	Tolerance (+/-)cm	S	M	L	XL	XXL	3XL	
Waist	1	81.3	91.4	101.6	111.8	121.9	127.0	
Hip	1	101.6	111.8	121.9	132.1	142.2	147.3	
Length	1	149.9	149.9	149.9	149.9	149.9	149.9	
Inseam	1	81.3	81.3	81.3	81.3	81.3	81.3	
Fly opening	1	17.8	17.8	17.8	17.8	17.8	17.8	
Velcro opening at the bottom	1	35.6	35.6	35.6	35.6	35.6	35.6	

BIB OVERALL MEASUREMENT CHART - INCHES							Size Spec # 466	
Particulars	Tolerance (+/-)cm	S	M	L	XL	XXL	3XL	
Waist	1	32"	36"	40"	44"	48"	50"	
Hip	1	40"	44"	48"	52"	56"	58"	
Length	1	59"	59"	59"	59"	59"	59"	
Inseam	1	32"	32"	32"	32"	32"	32"	
Fly opening	1	7"	7"	7"	7"	7"	7"	
Velcro opening at the bottom	1	14"	14"	14"	14"	14"	14"	





**MEASUREMENT CHART - CMS / INCHES**



**SIZING: US/EU**

32" LENGTH COAT MEASUREMENT CHART - CMS						Size Spec # 467	
Particulars	Tolerance (+/-)cm	SMALL	MEDIUM	LARGE	X-LARGE	XXL	3XL
Chest	1	121.9	132.1	137.2	147.3	152.4	162.6
Front Length from collar joint till bottom	1	81.3	81.3	81.3	81.3	81.3	81.3
Sleeve Length	1	63.5	66.0	66.0	66.0	66.0	66.0
Center back length	1	90.2	90.2	90.2	90.2	90.2	90.2
Zipper Length (7 INCH GAP FROM BOTTOM)	1	63.5	63.5	63.5	63.5	63.5	63.5
SHOULDER	1	50.8	55.9	58.4	61.0	63.5	63.5

32" LENGTH COAT MEASUREMENT CHART - INCHES						Size Spec # 467	
Particulars	Tolerance (+/-)cm	SMALL	MEDIUM	LARGE	X-LARGE	XXL	3XL
Chest	1	48"	52"	54"	58"	60"	64"
Front Length from collar joint till bottom	1	32"	32"	32"	32"	32"	32"
Sleeve Length	1	25	26	26	26	26	26
Center back length	1	35.5"	35.5"	35.5"	35.5"	35.5"	35.5"
Zipper Length (7 INCH GAP FROM BOTTOM)	1	25"	25"	25"	25"	25"	25"
SHOULDER	1	20	22	23	24	25	25





**BIB & COAT TECHNICAL DATA SHEET**



**TARAMOD™ MA CINCO 250 (94109)**

TaraMod™ is a range of inherently flame Modacrylic and Cellulose blended protective clothing with outstanding resistance to chemicals and solvents

LIGHT WEIGHT SELF-EXTINGUISHING SOFT NON-ALLERGIC

**TECHNICAL CHARACTERISTICS**

<b>WEAVE</b>	Rip Stop
<b>WEIGHT</b>	250 GSM (±5%)

PARAMETERS	STANDARD	WARP	WEFT
TENSILE STRENGTH	EN ISO 13934-1	650 N	400 N
TEAR STRENGTH	EN ISO 13937-2	25 N	20 N
DIMENSIONAL STABILITY (60°C)	EN ISO 6330:2000-6N/ ISO 5077:2007	± 3%	± 3%
HEAT SHRINKAGE (180±5°C)	ISO 17493:2000	<5%	
COLOR PERFORMANCE	ISO 105 C06	Grade 3 - 4	
CARE INSTRUCTION			

NORMS	PARAMETERS		
	EN ISO 11612	Flame spread: ISO 15025	A1
		Convective Heat: ISO 9151	B1
		Radiant Heat: ISO 6942	C1
		Contact Heat: ISO 12127	F1
	EN ISO 11611	Welding Application	Class 1 - A1
	EN 1149-5	Electrostatic Dissipative Charges	Met
	EN 61482-1-2	Electric arc Protection	Class 1
	NFPA 70E	Protection for Electrical Safety - ASTM F 1959	ATPV: 12 cal/cm <sup>2</sup>